



Parts of a Flower

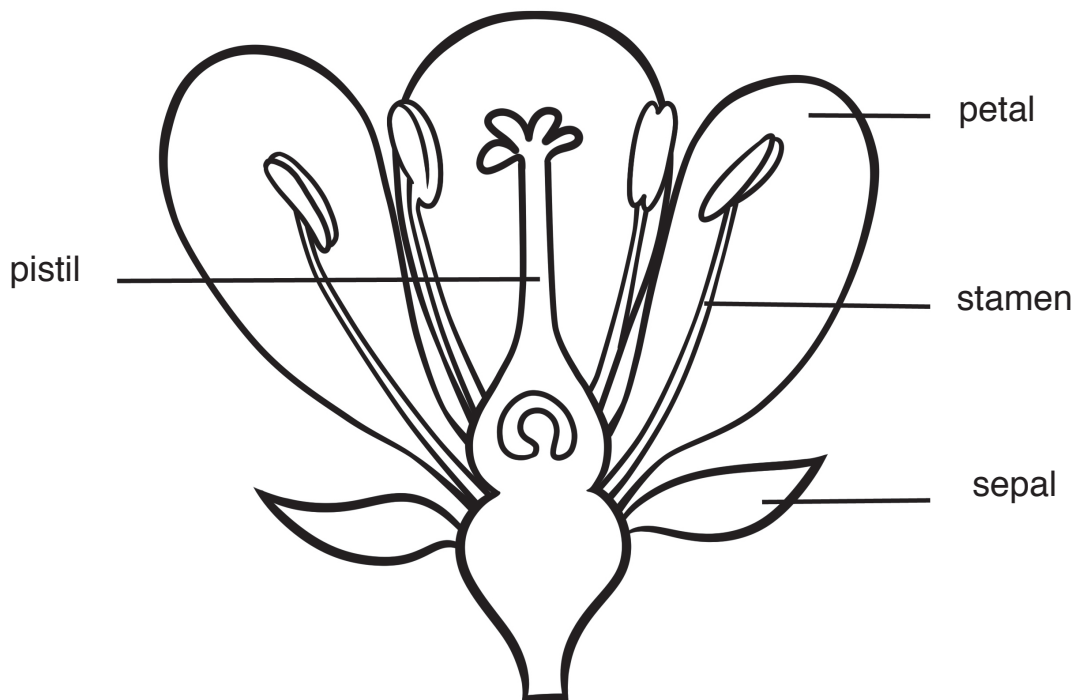
What do the different parts of a flower do?

Sepals: A flower starts out as a flower bud. On the outside of the flower bud are small green leaves called sepals. The sepals protect the flower growing inside. When the flower blooms, you can see the sepals at the bottom of the flower.

Petals: Some flowers have large petals, and some have small petals. The petals are often brightly colored. The petals can make birds and insects want to come to the flower.

Pistil: The pistil is in the middle of the flower. At the bottom of the pistil is a thick part where seeds grow.

Stamens: The stamens are long and thin. They grow all around the pistil. The top part of the stamen makes a powder called pollen. Pollen from the stamen gets on the top of the pistil. Then a seed grows in the pistil.



continued next page 